



## How to Reset Fairy Cut license

### Reset license from your new computer

#### Step 1

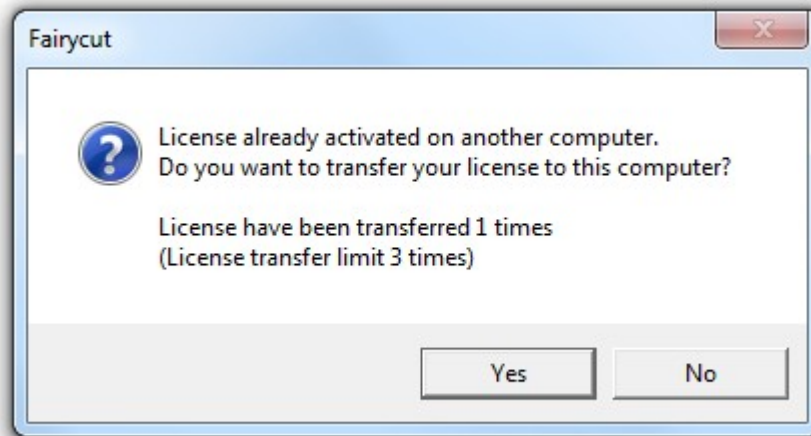
Open Fairy Cut



Enter your license **Activation Number** & **Password**. Then click on the **Activate** button.

## Step 2

If you already have activated the license on another computer the software will display the following screen.

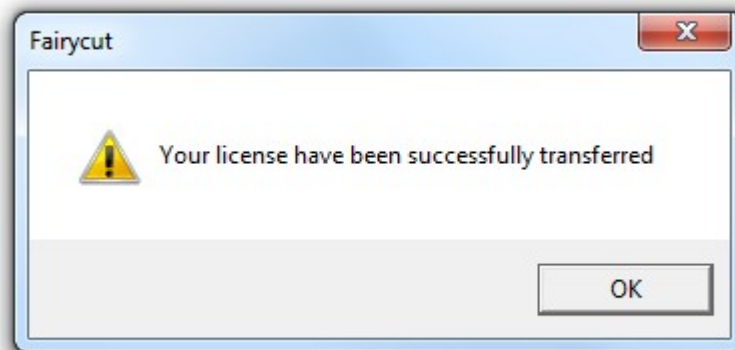


Click on the **Yes** button to transfer your license. Note that you only get the 3 chances to transfer your license to another computer.

You can always send an email to [support@fairycut.com](mailto:support@fairycut.com) and ask us to change the reset limit.

## Step 3

If the license transfer succeed the software will display the following screen.

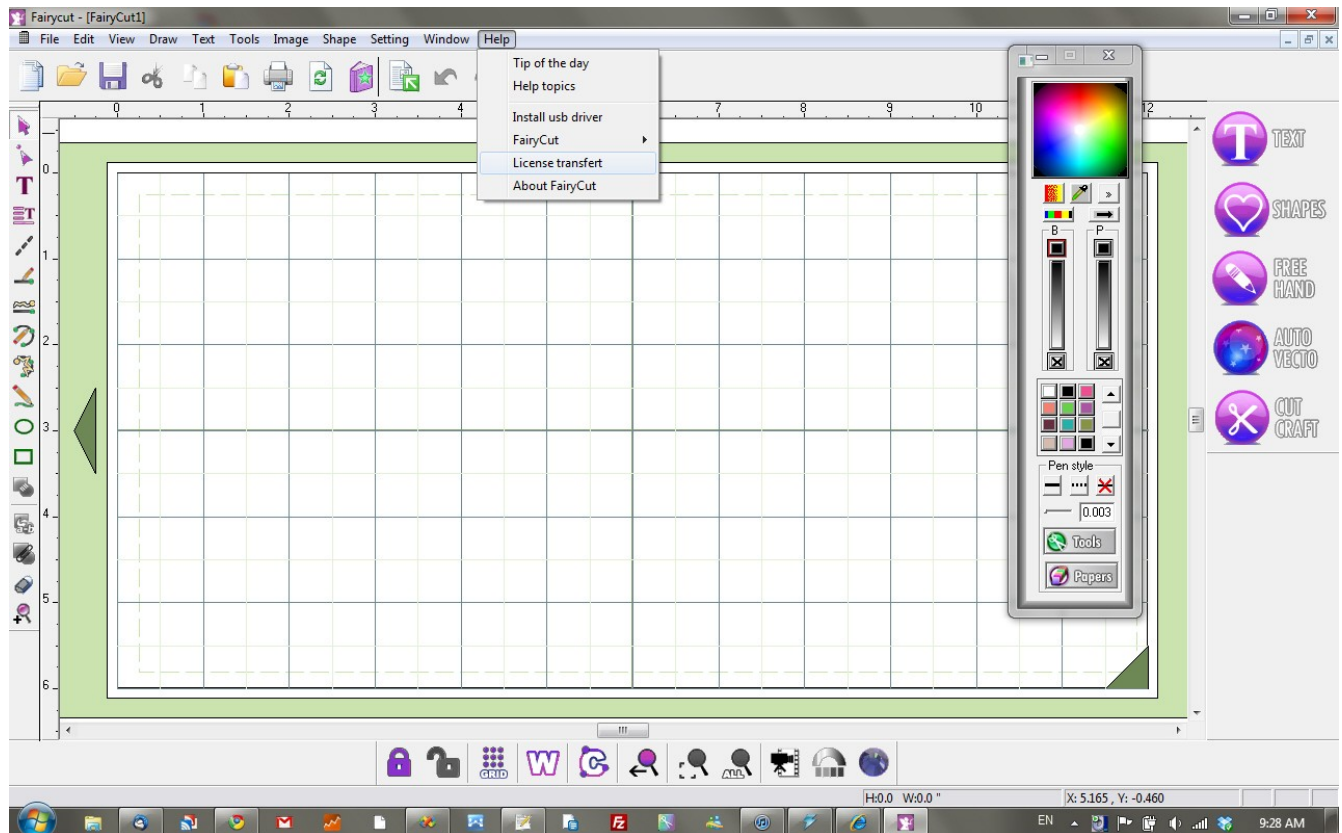


# Reset license from your old computer

## Step 1

Open Fairy Cut

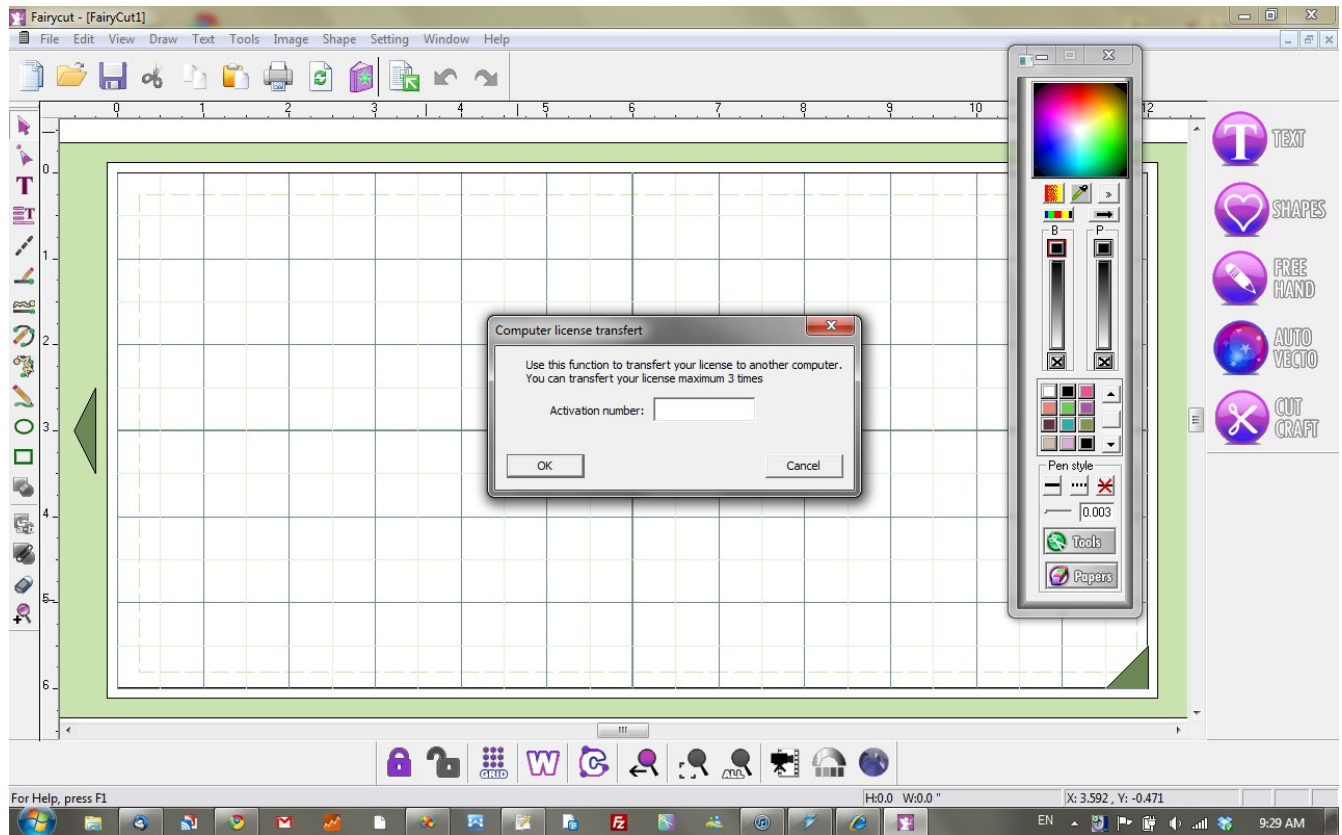
**HELP -> License transfert**



\* Note you cannot transfer a license in **DEMO MODE**

## Step 2

**Enter** your software **activation code** and **click** on **OK** button.



## Step 3

A confirmation box will pop-up

“ License transfert succes: You can transfert your license to another computer. ”

**click** on **OK** button

